



# **Environmental Sustainability Strategy 2025-2028**

# Foreword

LSTM is fully committed to addressing environmental sustainability impacts from our activities and operations and contributing to climate justice, as specified in the [LSTM Strategic Plan 2023-28](#) priority “investing in the future”. We seek to minimise our carbon footprint and embed sustainable working practices, promote biodiversity, responsible resource use, waste management and transport, and commit to offsetting our residual carbon emissions via schemes that directly support the communities with which we work.

Our Sustainability and Environment Committee was established in 2021 and has engaged staff and students in driving positive and meaningful action to address LSTM’s contribution to the climate crisis through teaching and research, and within our partnerships and collaborations. This Environmental Sustainability Strategy defines how we will coordinate our strategic initiatives to build on our foundational achievements to further improve our environmental sustainability performance, aligning with the UN Sustainable Development Goals (SDGs) to provide a comprehensive international framework to evaluate our impacts locally and globally.

The strategy supports the delivery of [LSTM’s commitment to the UN Global Compact](#) for;

- Environment Principle 7: Businesses should support a precautionary approach to environmental challenges.
- Environment Principle 8: Undertake initiatives to promote greater environmental responsibility.
- Environment Principle 9: Encourage the development and diffusion of environmentally friendly technologies.

It also sets out key actions required to deliver our environmental sustainability objectives and markers of success. These objectives also support the six priority areas of the [Concordat for Environmental Sustainability of Research and Innovation Practice](#), to which LSTM has committed to as a signatory.

A key pillar of this strategy is the development and implementation of an institute-wide Carbon Management Plan that will shape LSTM’s decarbonisation actions and pathways towards achieving Net Zero emissions targets by no later than 2040.

# TABLE OF CONTENTS

<b>Table of Contents</b> .....	3
<b>Vision</b> .....	4
<b>Context and purpose</b> .....	4
Climate change and our responsibility .....	4
LSTM Strategic Plan 2023-2028 .....	4
Environmental Sustainability in LSTM Research and Innovation.....	4
Equity, Diversity, Inclusion (EDI) and Sustainability .....	5
Supporting Documents .....	5
<b>United Nations Sustainable Development Goals [UNSDG]</b> .....	6
Definition of Sustainability .....	6
<b>UN Global Compact</b> .....	6
<b>LSTM'S Environmental Sustainability Journey So Far</b> .....	7
<b>Leadership and Governance</b> .....	8
<b>Research</b> .....	9
<b>Education</b> .....	12
<b>Investing In The Future</b> .....	14
<b>Partnership and Collaboration</b> .....	17
<b>Appendix A:</b> .....	19
<b>Appendix B:</b> .....	20
<b>Glossary</b> .....	21

## VISION

LSTM's vision is: *Healthy lives across the world - Improving health outcomes in disadvantaged populations globally, through partnership in research and education.*

Our goal for sustainability is to reduce carbon emissions from our operations and activities to achieve net zero by 2040, to disseminate our good practices; and to cultivate sustainability within our education and research activities amongst stakeholders within and beyond LSTM.

## CONTEXT AND PURPOSE

---

### CLIMATE CHANGE AND OUR RESPONSIBILITY

Climate change is a driver of poor health outcomes and inequity. As a leading institute of global health, LSTM has an obligation to consider the sustainability and environmental impact of all our activities and promote climate justice.

LSTM understands its responsibility to protect the environment from the impact of its operations and to engage its staff and students and the wider community to minimise its environmental impact through teaching and research.

This Environmental Sustainability Strategy is based on the principles held within the LSTM Sustainability and Environmental Policy, governed by the Sustainability and Environment Committee and delivered through LSTM's Green Network.

---

### LSTM STRATEGIC PLAN 2023-2028

This Environmental Sustainability Strategy supports the LSTM 2023-28 Strategic Plan's vision, priorities and objectives, with clear commitment to: i) invest in our future through positive action in education, research and within local and international partnerships that contribute to climate justice, ii) continue to drive forward sustainability initiatives to minimise LSTM carbon footprint, and; iii) embed sustainable working practices.

---

### ENVIRONMENTAL SUSTAINABILITY IN LSTM RESEARCH AND INNOVATION

LSTM is a signatory to the [Concordat for the Environmental Sustainability of Research and Innovation Practice](#). This strategy supports priorities in the Concordat: Leadership and system change, Sustainable infrastructure, Sustainable procurement, Emissions from business and academic travel, Collaborations and partnerships, and Environmental impact and reporting data. LSTM is also a signatory to the [Laboratory Efficiency and Assessment Framework \(LEAF\)](#), demonstrating a commitment to improving the sustainability of our laboratory practices.

---

## EQUITY, DIVERSITY, INCLUSION (EDI) AND SUSTAINABILITY

LSTM recognises that sustainability is directly linked to LSTM's EDI principles, and it is a central component of creating a more equitable and sustainable world, supporting UN SDG 10 (Reduced Inequalities). This sustainability strategy will pro-actively promote inclusivity, encouraging 'everyone' to participate in environmental sustainability initiatives and dialogues, promote inclusive access to training and resources, whilst simultaneously bringing together different perspectives and a diverse range of problem-solving and creative actions.

---

## SUPPORTING DOCUMENTS

This strategy is supported and aligned with the following documents:

- [LSTM Sustainability and Environment Policy](#)
- [Sustainability and Environment Action Plan](#)
- [LSTM Global Travel Policy](#)
- Carbon Management Plan
- Waste Management Strategy (*under development*)
- [LSTM Financial Regulations](#)
- [LSTM Local Travel Plan](#)
- [Concordat for the Environmental Sustainability of Research and Innovation Practice](#)

# UNITED NATIONS SUSTAINABLE DEVELOPMENT GOALS [UNSDG]

## DEFINITION OF SUSTAINABILITY

The United Nations (UN) defines sustainability as “meeting the needs of the present without compromising the ability of future generations to meet their own needs.” The aim is to achieve a balance between improving life of global communities, whilst protecting our natural environment by considering links between society, economic and environmental aspects.

This strategy aims to integrate the UN Sustainable Development Goals (SDGs) (Figure 1) across our activities, catalysing change and supporting continual development at different levels within LSTM. LSTM activities will be aligned with the SDGs, providing a comprehensive international framework to measure LSTM’s position and contribution towards local and global environmental sustainability. As LSTM progresses, we will further consider any cascading or future implications that might stem from explicit SDG indicators to transparently and thoughtfully deliver positive change.

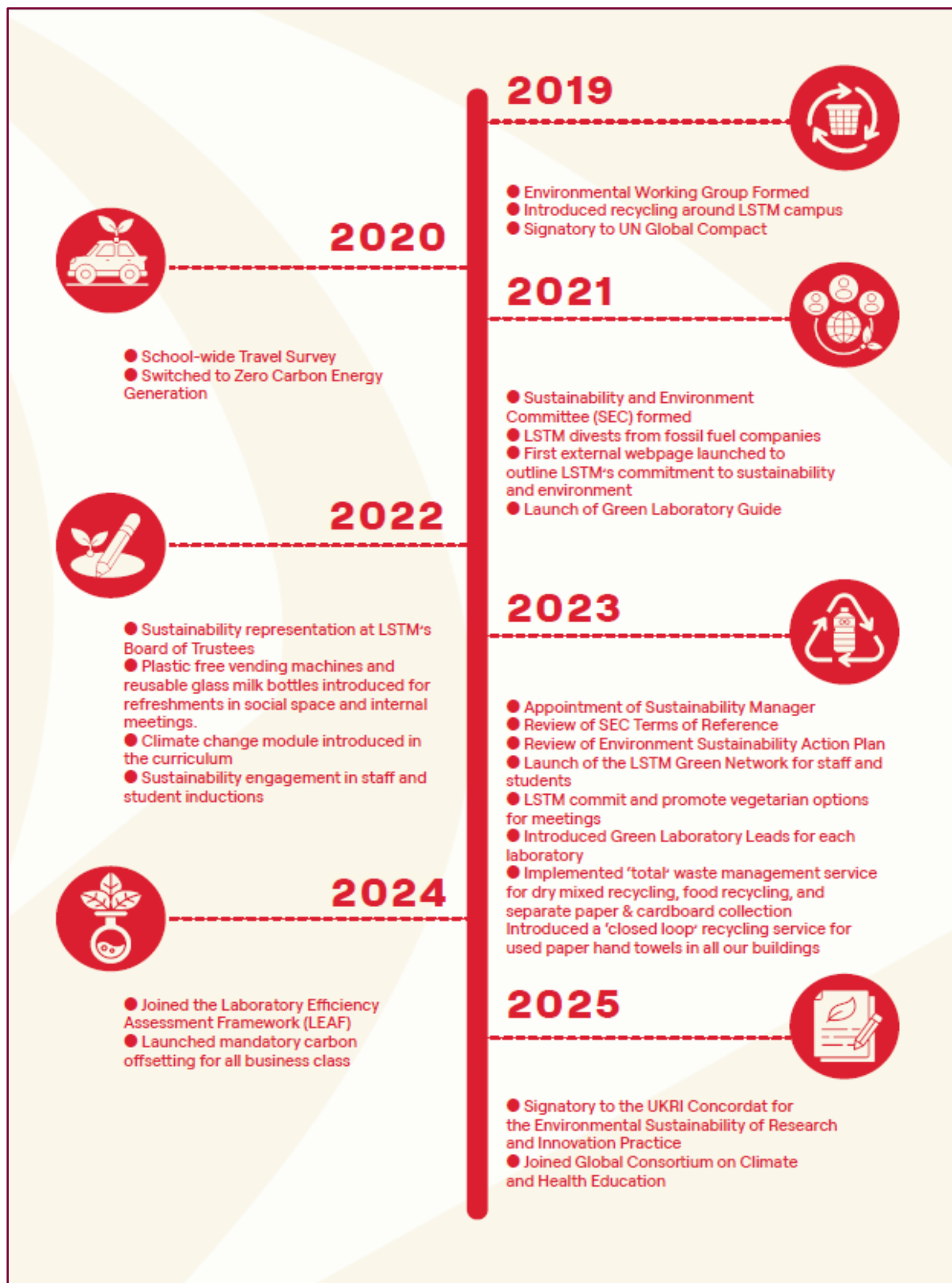


Figure 1. The UN Sustainable Development Goals (SDGs)

## UN GLOBAL COMPACT

LSTM is a signatory to the United Nations Global Compact and its Ten Principles in the areas of Human Rights, Labour, Environment and Anti-Corruption. This strategy supports the commitment made to upholding and promoting the core principles of accountability, transparency, ethical behaviour, consideration of stakeholder interest and respect for human rights, the rule of law and international norms of behaviour.

# LSTM'S ENVIRONMENTAL SUSTAINABILITY JOURNEY SO FAR



# LEADERSHIP AND GOVERNANCE

The LSTM Leadership Executive Team is committed to transparency and is accountable for the delivery of the targets set out in this strategy document. The strategy will be governed and delivered through LSTM's Sustainability and Environment Committee (SEC), which reports to the Leadership Executive Team. Sustainability representation on LSTM's Board of Trustees will monitor progress, further emphasising the institution's commitment and robust oversight.

Everyone within LSTM has a responsibility to embrace the sustainability commitments in line with LSTM values. Clear LSTM leadership and governance in environmental sustainability inspires action, fosters collaboration, and drives change towards a sustainable future, encompassing both environmental and societal well-being. This effectively supports our responses to global health challenges caused by climate injustice.

Our commitments are to:

- Publicly report LSTM environmental sustainability progress in our Annual Financial Statement
- Report our environmental data to the Higher Education Statistics Agency (HESA)
- Make publicly available our progress towards our emission targets of achieving net zero by no later than 2040
- Maintain our obligations to the Principles of the UN Global Compact, Concordat for the Environmental Sustainability of Research and Innovation Practice, and alignment to the UN Sustainable Development Goals
- Embed fair, sustainable, and ethical supply chain management into all procurement activities, ensuring supplier practices align with environmental, social, and governance standards, and contribute to LSTM's Net Zero and climate commitments.
- Raise the profile of LSTM's commitment to Sustainability and Environmental issues via robust internal and external communications
- Foster environmental sustainability literacy within LSTM staff by embedding mandatory training delivered as part of our induction process and utilising staff newsletters, campaigns and notice boards to promote and celebrate action.
- Embed and monitor environmental sustainability actions within this strategy into the work of other LSTM committees and departments.

This Environmental Sustainability Strategy draws on the four key pillars of the wider LSTM Strategic Plan, namely: Research, Education, Investing in the Future, and Collaborative Partnership.

## RESEARCH

LSTM research is focused on enhancing our knowledge and understanding of cross-cutting global issues that pose a threat to human health and development, and on responding to the existing and emerging global health challenges faced by disadvantaged people in society. Climate change significantly impacts global health research by increasing the prevalence and spread of infectious diseases, exacerbating heat-related illnesses, disrupting food security, and causing mental health issues due to displacement and extreme weather events, highlighting the need for research into prevention strategies, adaptation measures, and understanding the complex interactions between climate and health vulnerabilities across different populations.

### **What we have achieved:**

LSTM is fully committed to advancing knowledge and awareness at the intersection of climate and health. Climate change has been formally identified as one of LSTM's key 'Global Health Challenge Areas' in our 2023–2028 Strategy, highlighting our intent to focus institutional attention on this urgent issue. To help steer and shape the institutional research agenda in this space, LSTM has established a dedicated Health, Environment, and Climate Change Working Group. The group fosters interdisciplinary collaboration and is tasked with identifying research opportunities, partnerships, and funding streams. It also highlights proposals for advancement, supporting LSTM's ambition to gain recognition as a global leader in climate health.

LSTM researchers have already contributed to many diverse activities that align with the SDGs and have delivered impactful outcomes related to climate and health. Examples include LSTM researchers leading translational research that addresses the SDGs of quality education, good health and well-being for communities in malaria-endemic zones. This project has developed tools to support cost-effective decisions and now aims to include a One Health perspective to this decisions space by quantifying emissions and environmental impacts from scaled interventions. LSTM researchers are also actively seeking to understand the impact of extreme weather events and climate change on other infections related to human health, including mosquito-borne viral diseases, parasitic infections and water and food-borne bacterial and viral infections. Studies include developing models of climate-driven transmission of diseases, developing mitigation strategies for health consequences related to extreme weather events, and identifying how health low-resource health should prepare for future climate events and climate change. Further, the HIGH Horizons consortium includes researchers at LSTM and hub partner CeSHHAR studying the impact of climate on pregnant and postpartum women and their children in Africa, including simulating climate-responsive upgrades to maternity wards in rural Zimbabwe.

LSTM researchers also contributed extensively to the historic first Climate and Health Africa Conference (CHAC) held in Zimbabwe in 2024. The conference, convened with national ministries, drew over 400 delegates from 30 countries and highlights LSTM's active role in shaping Africa-led climate-health research and policy. This engagement aligns with the Harare Declaration's call for locally driven solutions and stronger African leadership in global climate-health strategy. As signatories to [the Concordat for the Environmental Sustainability of Research and Innovation Practice](#), LSTM also commits to ensuring that all our diverse research activities are carried out in the most environmentally sustainable way and that we maximize our alignment to the SDGs.

### Our Commitments:

- To develop new solutions through our global health research that address environmental challenges and to expand the scope and scale of our research activities that are aligned with the UN SDGs
- To define key research objectives in health, environment and climate change science and produce a roadmap to support delivery of a future research strategy in climate and planetary health via a dedicated institutional working group
- To contribute to the Liverpool City Region's innovation vision, including its Net Zero by 2040 commitment by delivering translational research and thought leadership on climate-resilient health systems
- To increase the number of strategic academic appointments in climate and planetary health and investment in interdisciplinary research that explores climate-driven determinants of health
- To embed environmental sustainability activities across our laboratory research portfolio
- To support research consortia to develop and embed sustainability plans



### We will do this by:

- Embedding climate and environmental sustainability considerations across research design, implementation, and evaluation phases.
- Developing internal training for researchers on planetary health and sustainability in research practices, including alignment and progression of the UN SDGs.
- Leveraging the Health, Environment, and Climate Change Working Group to coordinate interdisciplinary proposals, identify funding streams, and build capacity.
- Supporting consortia to integrate climate-health risks into preparedness and response frameworks, particularly around emerging pathogens and health systems resilience

- Promoting community-based participatory research to enhance the relevance and uptake of climate-resilient health solutions.
- Creating a toolkit for research teams to assess and mitigate the environmental impacts of their research activities, including supporting the delivery of sustainable and equitable research internationally.
- Integrating sustainable procurement guidance into research project planning and grant proposals, prioritising suppliers and products with low environmental impact and LEAF-aligned practices.

**Key measures of success:**

- To deliver >25% increase in research activities that are mitigating the impacts of climate change on health and wellbeing and aligned with the UNSDGs.
- Achieve silver level LEAF accreditation for all our research laboratories by 2028
- To establish and implement an institution-wide policy to reduce travel emissions associated with research activities

**Alignment with the UN SDGs:**



# EDUCATION

A major part of LSTM's strategy is to develop and nurture the global health leaders of the future; graduates who understand the sensitivities of working and undertaking research in resource-constrained environments. This strategy supports the development of student knowledge and skills relating to sustainability and climate change issues, empowering them to become environmentally conscious global health leaders and innovators with outstanding professionalism, highly sought after for their impact in health and other health-related sectors.

## **What we have achieved:**

The Faculty of Education has developed a range of opportunities to engage students in understanding the role climate change plays in health challenges and inequity. This has been in various forms such as:

- Workshops on climate change and mental health open to all students.
- Formal teaching embedded in both online and face-to-face modules.
- A full-day scenario planning exercise open to all students.
- Field trips within the UK and overseas.

The importance of climate change and sustainability to LSTM education is best highlighted by these topics emerging as major topics for master's student dissertation projects. Further, we have designed and validated a new MSc course in One Health and Tropical Disease which aims to highlight the importance of the relationship between people, animals, and the planet in which climate will play a key role. A face-to-face climate change module embedded within this programme is now compulsory for all students on this course.

## **Our Commitments:**

We understand that to combat inequity, the future global leaders need to be well-versed in the impact of their environment. The Faculty of Education is fully committed to ensuring all students gain a deep understanding of the impact of climate change and the environment in relation to their subject specialism. Embedding environmental literacy and systems thinking into education training is also strongly aligned with the principles of the UN SDGs and [the Concordat for the Environmental Sustainability of Research and Innovation Practice](#).

In line with our commitment to work in partnership, the Faculty of Education has created an Equitable Educational Partnership model and commits to establish several global transnational partnerships to maximise our reach. A fundamental part of this model is to use existing resources and processes to build capacity at the partner institution via knowledge exchange, opportunities to engage in LSTM support and development, including our 'Advance HE' learning and teaching Fellowship scheme,

and opportunities to share expertise with students via guest teaching and/or supervision.

**We will do this by:**

- Developing and delivering curricula that embed sustainability and inclusivity into educational practice by either regularly auditing modules and programmes and/or using sustainability as a theme in a periodic review of programmes.
- Providing development opportunities for academics and professional service staff, including training on carbon emissions and environmental awareness, to facilitate delivery of curricula.
- Identify, support, and promote student dissertation projects that relate to environmental and/or sustainability initiatives and research.
- Encourage PGR students to include a sustainability assessment in their thesis, when appropriate.
- Create extracurricular collaborative opportunities for students and staff to develop understanding of and solutions for environmental sustainability challenges.



Photo: A life on our planet screening for students

**Key measures of success:**

- Embedding of Education for Sustainability (ESD) into our taught programmes through a baseline audit and enhancement measures.
- Establish a minimum of five global transnational partnerships under our equitable educational partnership model to support curriculum innovation on climate and health
- Increase the number of master’s dissertations with a climate change and/or a sustainability focus by 50% by 2028 from the baseline of 2025

**Alignment with the UN SDGs:**

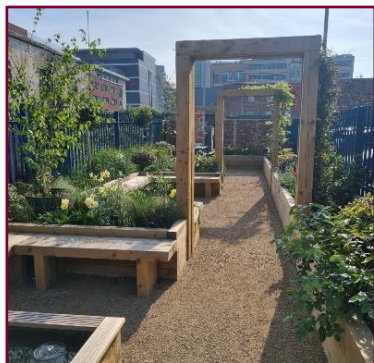


# INVESTING IN THE FUTURE

LSTM will continue to evolve and develop our organisational resources and capabilities and focus our strategic investment to achieve our mission and guarantee the future sustainability of the institute. We will ensure environmental sustainability considerations are embedded within our estate's development planning and LSTM operational activities, reducing carbon emissions, increasing our efficiency and adaptation to climate impacts.

## What we have achieved:

The Estates Department recognises that the main sources of environmental impact arise from both the built environment and operational activities of staff and students. We are continuously exploring opportunities to reduce our environmental impacts and future proof the school's building developments and operations by working closely with our suppliers and contractors and by supporting our professional and academic departments.



To reduce carbon impact, we switched to zero carbon energy generation supplied and installed photovoltaic panels on 50 % of Liverpool campus buildings. Carbon reduction measures are incorporated into the design of all building and refurbishment projects by improving thermal efficiency of the buildings and reducing reliance on gas heating systems. We have introduced measures to reduce energy and water use by introducing new energy efficient dehumidifiers, replacing non-efficient lighting to low energy LED lighting and adjusting AHU settings to be more efficient. We advocate on general waste prevention and have introduced a school-wide recycling scheme. Though the Liverpool campus is in an urban area, we have created a Wellbeing Garden for staff and students to support campus biodiversity.

LSTM has divested from fossil fuel companies and its endowments portfolio is rated 4 stars overall, indicating our investment in companies that have a high Environmental Social and Governance rating (LGT ESG Score 72.9, portfolio coverage of 92%) and an above average decarbonisation pathway compared to the benchmark portfolio comparator and the top 3000+ global organisations required to deliver the Paris Agreement of a temperature rise of no more than 1.5%. LSTM is therefore committed to ethical and sustainable investments and continues to explore ways to expand its efforts in this area. LSTM has also introduced carbon offsetting for all staff work-related air travel and has set up a mechanism to flagging sustainable products in its internal buying catalogue. The LSTM Procurement Team includes environmental sustainability

impacts and mitigation in procurement decisions, and we are committed to supplier engagement and transparency in procurement scoring related to environmental and ethical criteria.

### **Our Commitments:**

We are committed to continuously working towards minimising our environmental sustainability aspects and impacts, this includes:

- To develop a science-based Carbon Management Plan
- To continue to reduce impact of carbon emissions from staff work-related travel
- To develop and implement environment and sustainability training to all staff, to enable informed choices relating to sustainable practices
- To expand ethical and sustainable investments within our endowment portfolio
- To ensure environmental sustainability is given sufficient weighting in all procurement decisions
- Linking procurement decisions directly to our Carbon Management Plan's scope 3 emissions reduction, including encouraging key LSTM supplies to achieve Net Zero emissions by 2040, with measurable interim targets and transparent reporting
- To consider innovative ways to promote biodiversity across the campus and beyond



### **We will do this by:**

- Sourcing and working with an external specialist contractor to produce an institutional Carbon Management Plan
- Engaging staff to raise awareness of LSTM travel emissions, encouraging participation and acceptance of reduced emissions travel practices
- Working with LSTM's Learning and Development Team to develop and roll out a mandatory environment and sustainability training module
- Developing and implementing a Sustainable Procurement Policy at LSTM
- Work with our financial partners to explore different ways to expand LSTM endowment portfolio into more ethical and sustainable investments.
- Delivering supplier engagement programmes to gain visibility of sources of emissions through the *life-cycle assessment* of products and services (cradle-to-grave), identifying areas for improvement, driving sustainability, innovation and long-term success, e.g. packaging reduction, low-carbon deliveries, waste prevention.
- Engaging staff, students and external specialists to develop a biodiversity action plan

### Key measures of success:

- To have a carbon management plan in place to underpin a transition towards net zero scope 1 and 2 emissions by 2035 and scope 3 by 2040
- Introduced an online environmental sustainability training module by end 2026 and delivered training across all new and existing staff by end 2027
- Developed and integrated a Sustainable Procurement Policy at LSTM that encourages and guides more environmentally sustainable procurement decisions
- Performance measures and reports from key Supplier contracts demonstrating progression towards Net Zero.
- Developed a Biodiversity Action Plan for LSTM identifying spaces and projects that create, improve and encourage biodiversity across the estate and beyond.

### Alignment with the UN SDGs:



# PARTNERSHIP AND COLLABORATION

We aim to nurture, develop and expand our equitable partnerships, working with those who share our vision for sustainable development and global health equity. We will actively seek out equity within our partnerships, collaborating with those who can help realise our ambitions and amplify the potential of our research for the communities in greatest need, in an environmentally sustainability manner.

## What we have achieved:

In the years leading up to LSTM's 125<sup>th</sup> Anniversary in 2023, staff in the organisation felt the need to critically reflect on how an organisation rooted in colonial and tropical medicine can take action to rebalance power asymmetries in our transboundary academic partnerships. We therefore set out on a mixed methods and participatory research approach with 20 transboundary partner organisations across 15 different countries in Africa, Asia and the Middle East to co-create a set of principles to promote equitable academic partnerships. This work led to the establishment of a Global Hubs Council. Council meetings are virtual or hybrid and are chaired in rotation by LSTM and three independent Hubs in Africa (Kenya, Malawi and Zimbabwe). Through the Council we seek joint accountability for the principles, with a strong focus on "south-south, and south-north" sharing of best practice between the Hubs and LSTM and each of their regional and other networks. Actions are taken forward by cross-Hub Working Groups. To date, Working Groups on Human Resources and Research have been established. One of the Hubs, CeSHHAR Zimbabwe, hosted the first Climate Health Africa Conference in October 2024, demonstrating the commitment of LSTM and its hubs to delivering environmental focused research relating to global health.



## Our Commitments:

- Extend the work on equitable partnerships recognising the importance of nurturing academic partnerships beyond the current Hubs
- Engage in two-way knowledge exchange with our global partners and beyond to embed environmental sustainability into practice
- Conduct our collaborative research activities in partnerships that support social and environmental equity
- Ensure global access and environmental impact are reflected upon during translation of our health innovations
- Proactively seek opportunities in carbon offsetting projects within LSTM partner hubs

### **We will do this by:**

- Establishing cross-Hub work to share and develop best practice and regional/international engagement in Environmental Sustainability through:
  - A) Professional Services operations (e.g. through establishment of a cross-Hub Working Group or Task and Finish Group)
  - B) Research (e.g. as a specific focus of the Global Hubs Research Working Group or interface with the Institute for Research)
- Including reflexivity statements with manuscript submissions to honestly reflect, learn and drive forward equitable and collaborative efforts.
- Extending LSTM procurement standards to partner country purchasing where feasible, supporting local suppliers who meet environmental standards and building local capacity in sustainable sourcing.
- Working with partners to identify joint procurement opportunities that reduce freight emissions (bulk shipping, shared suppliers).

### **Key measures of success:**

- Establishment of Cross-Hub strategic environmental sustainability action plans between LSTM and its global partners by 2028 for:
  - A. Professional Services
  - B. Research groups
- Evidence that early consideration and planning reduce overall emissions from research projects through improved planning, procurement and analytical processes by 2028.

### **Alignment with the UN SDGs:**



# APPENDIX A:

## **Alignment with the Wellcome Trust Concordat for Environmental Sustainability of Research and Innovation Practice**

### **Concordat Priority Area Strategic Alignment Supporting Actions and Evidence**

#### **1. Leadership and Systemic Change**

Embedded in governance through the Sustainability and Environment Committee (SEC), with institutional leadership accountability and Board of Trustees oversight. - SEC reports to Leadership Executive Team (LET) and Board of Trustees. - Environmental sustainability included in LSTM's Strategic Plan 2023–28. - Annual reporting to HESA and public sustainability commitments.

#### **2. Sustainable Infrastructure**

Covered under the "Investing in the Future" strategic pillar. Commitment to carbon management and low-carbon estates development. - Carbon Management Plan in development. - 100% renewable energy for Liverpool buildings. - Solar PV on 50% of campus. - Sustainability integrated into new building designs.

#### **3. Sustainable Procurement**

Development of a Sustainable Procurement Policy and improved internal procurement systems. - Environmental criteria included in tenders and travel contracts. - Internal catalogues flag sustainable purchasing options. - Procurement Policy under review to embed environmental metrics.

#### **4. Emissions from Business and Academic Travel**

Focused actions on travel data collection, carbon offsetting, and behaviour change campaigns. - Mandatory carbon offsetting for business class travel. - Regular staff travel surveys. - New travel management contract includes sustainability performance requirements.

#### **5. Collaborations and Partnerships**

Promotes equitable, environmentally conscious global partnerships. - Cross-Hub Working Groups established. - Joint climate-health research activities. - Hosted and co-led Africa's first Climate and Health Conference (2024).

#### **6. Environmental Impact and Reporting**

Commitment to transparent monitoring and reporting of environmental performance. - Public emissions reporting via Financial Statements. - Scope 1–3 carbon accounting in progress. - Targeted LEAF accreditations. - Data shared with HESA and partners.

## APPENDIX B:

### Theory of Change – LSTM Environmental Sustainability Strategy

#### Ultimate Impact

A low-carbon, sustainable global health institution that delivers equitable, climate-resilient solutions with and for the most vulnerable communities.

#### Outcomes

##### Short-Term (by 2026):

Staff and student engagement in sustainability increased.

Environment and sustainability online training module introduced

Carbon Management Plan finalised and implementation begins.

Research proposals incorporate sustainability considerations.

##### Medium-Term (by 2028):

Scope 1 & 2 emissions reduced measurably.

Environment and sustainability training delivered to all staff.

Silver LEAF accreditation achieved across all research labs.

Sustainable Procurement Policy adopted.

Sustainability education embedded in taught programmes.

##### Long-Term (by 2040):

Net Zero achieved across Scope 1–3 emissions.

Sustainability embedded in institutional culture and operations.

Global recognition as a leader in climate-health research.

#### Activities

Rollout of staff training and internal engagement campaigns.

Development and implementation of a Carbon Management Plan.

Expansion of LEAF and lab-based sustainability initiatives.

Inclusion of sustainability in curriculum design and research frameworks.

Implementation of Sustainable Procurement Policy.

Collaboration through Global Hubs for joint sustainability actions.

Integration of climate-health as a cross-cutting research theme.

#### Inputs and Enablers

Institutional leadership commitment and SEC oversight.

Dedicated Sustainability Manager and Green Network.

LSTM Strategic Plan 2023–28 and budget alignment.

Engagement from staff, students, and global partners.

Membership of Wellcome Concordat for Sustainability and UN Global Compact.

Partnerships with local, national, and global stakeholders.

# GLOSSARY

## **LEAF - Laboratory Efficiency Assessment Framework**

This is a standard set by University College London (UCL) to improve the sustainability and efficiency of laboratories. The programme helps laboratories reduce their carbon emissions and create an environment that supports research quality. Laboratories are awarded either a Bronze, Silver, or Gold level depending on how many sustainability actions they take.

## **Net zero: [UK Government Net Zero Strategy](#) Definition**

The legal commitment to reduce greenhouse emissions to as close to Zero as possible, with the small amount remaining emissions absorbed. This is to be met by 2025 through a combination of emission reduction strategies and carbon removal methods, such as planting trees, restoring peatlands, or using carbon capture technology.

## **Scope 1: DIRECT GHG EMISSIONS**

These are emissions issued from sources directly controlled by the LSTM, such as stationary combustion equipment used for building heating, fuel consumption, and fugitive emissions from refrigerants leaks/maintenance.

## **Scope 2: ENERGY INDIRECT EMISSIONS**

These are emissions issued from electricity production, or from the imported heat or vapor consumed in the buildings and equipment operation, provided by an external entity (sources out of the organizational boundaries).

## **Scope 3: OTHER INDIRECT GHG EMISSIONS**

These are emissions issued from the LSTM activities but from sources controlled by external enterprises, such as waste disposal (transport and processing) and the transportation means of staff and students (business and commuting).

## **[United Nations Sustainable Development Goals:](#)**

### **Goal 1: No Poverty**

*End poverty in all its forms everywhere*

### **Goal 2: Zero Hunger**

*End hunger, achieve food security and improved nutrition and promote sustainable agriculture*

### **Goal 3: Good Health and Wellbeing**

*Ensure healthy lives and promote well-being for all at all ages*

### **Goal 4: Quality Education**

*Ensure inclusive and equitable quality education and promote lifelong learning opportunities for all*

**Goal 5: Gender Equality**

*Achieve gender equality and empower all women and girls*

**Goal 6: Clean Water and Sanitation**

*Ensure availability and sustainable management of water and sanitation for all*

**Goal 7: Affordable and Clean Energy**

*Ensure access to affordable, reliable, sustainable and modern energy for all*

**Goal 8: Decent Work and Economic Growth**

*Promote sustained, inclusive and sustainable economic growth, full and productive employment and decent work for all*

**Goal 9: Industry, Innovation and Infrastructure**

*Build resilient infrastructure, promote inclusive and sustainable industrialization and foster innovation*

**Goal 10- Reduce inequalities**

*Reduce inequality within and among countries*

**Goal 11 – Sustainable Cities and Communities**

*Make cities and human settlements inclusive, safe, resilient and sustainable*

**Goal 12 – Responsible Consumption and Production**

*Ensure sustainable consumption and production patterns*

**Goal 13 - Climate Action**

*Take urgent action to combat climate change and its impacts*

**Goal 14: Life Below Water**

*Conserve and sustainably use the oceans, seas and marine resources for sustainable development*

**Goal 15: Life on Land**

*Protect, restore and promote sustainable use of terrestrial ecosystems, sustainably manage forests, combat desertification, and halt and reverse land degradation and halt biodiversity loss*

**Goal 16: Peace, Justice and Strong Institution**

*Promote peaceful and inclusive societies for sustainable development, provide access to justice for all and build effective, accountable and inclusive institutions at all levels*

**Goal 17 – Partnerships for the Goals**

*Strengthen the means of implementation and revitalize the Global Partnership for Sustainable Development*